

SCRUTINEERING AT SUMMERNATS 31

IMPORTANT INFORMATION



The Summernats is the largest modified car festival in the Southern Hemisphere attracting more than 100,000 spectators and close to 2,000 entrants over four days each year.

To cater for high numbers of entrant cars, scrutineering will operate extended hours from two locations:

- **ROAD REGISTERED ENTRANT CARS** driven to the event will be scrutineered in the Betting Hall at Canberra Thoroughbred Park, Randwick Rd Mitchell (RACECOURSE) and will operate on Wednesday and Thursday ONLY.
- **CARS ARRIVING ON TRAILERS OR WITH TRAILERS** will be scrutineered in the Scrutineering Pavilion within Exhibition Park In Canberra accessed via Gate 7 (EPIC).
- **TUESDAY AND FRIDAY SCRUTINEERING – ALL CARS** will be scrutineered at Exhibition Park In Canberra accessed via Gate 7 (EPIC)

HOURS OF OPERATION:

DAY	RACECOURSE HOURS		EXHIBITION PARK HOURS	
	START	FINISH	START	FINISH
TUESDAY, 2 JAN 2018	N/A	N/A	05:00PM	10:00PM
WEDNESDAY, 3 JAN 2018	11:00PM	10:00PM	11:00AM	10:00PM
THURSDAY, 4 JAN 2018	11:00PM	10:00PM	07:00AM	10:00PM
FRIDAY, 5 JAN 2018	N/A	N/A	07:00AM	01:00PM

LOCATION AND TIME SLOT ALLOCATION:

The Scrutineering location you are allocated is based on the selection you make in the **SCRUTINEERING** section of your online car entry.

Entrants must arrive at their selected and approved timeslot. The scrutineering details you select on your entry will be clearly specified on your E-Ticket once your entry is approved. Please check the details to ensure you arrive at the correct location at the correct time.

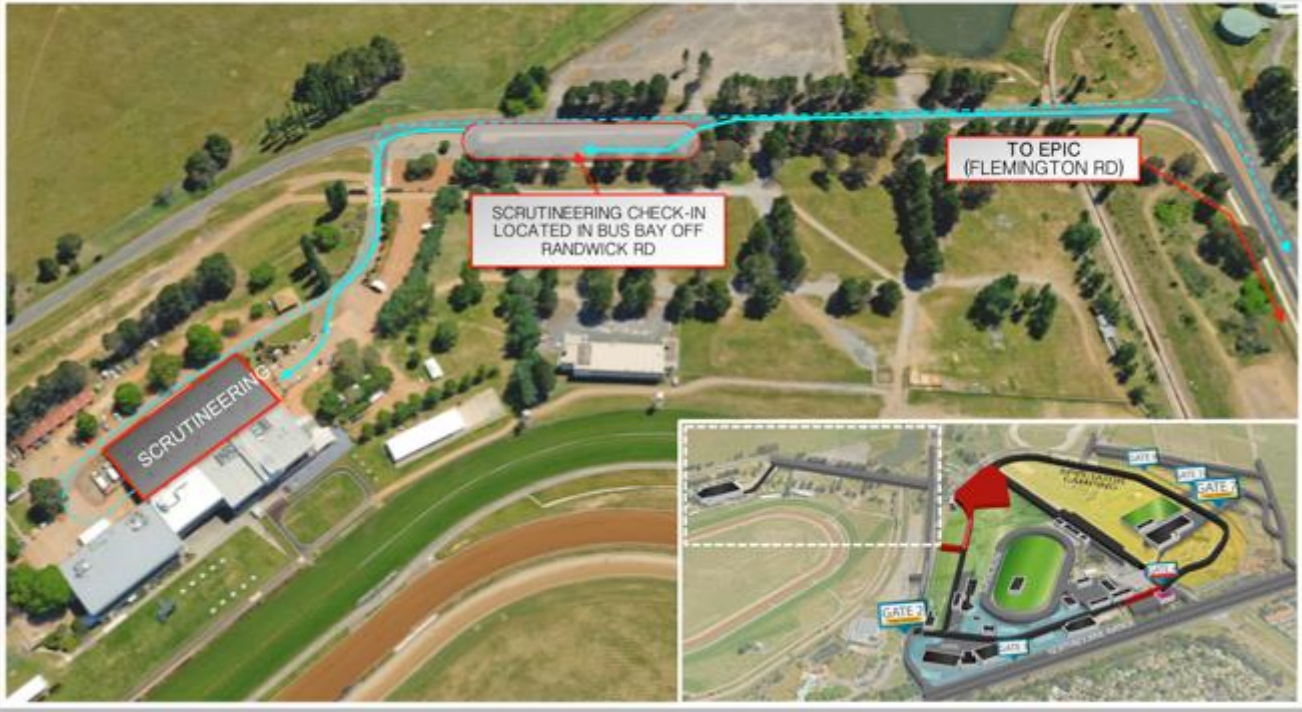
ENTRANTS THAT ARRIVE OUTSIDE OF THEIR ALLOCATED TIME SLOT OR AT THE WRONG SCRUTINEERING LOCATION WILL BE TURNED AWAY.

Please refer to the maps below for direction to each of the scrutineering locations.

SCRUTINEERING AT SUMMERNATS 31
IMPORTANT INFORMATION



SCRUTINEERING – THOROUGHBRED PARK RANDWICK RD MITCHELL



SCRUTINEERING – EXHIBITION PARK IN CANBERRA GATE 7

